

Our Partners Page

<https://northmaritime.gr/partners/>

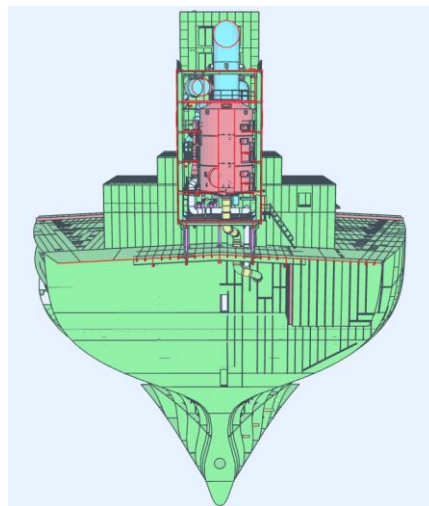


Clean Marine – Exhaust Gas Cleaning and Air Lubrication Systems

For 20 years Clean Marine has served clients across the full range of shipping sectors, manufacturing robust emissions cleaning and reduction products. Clean Marine's exhaust gas cleaning system is certified to reduce Sulphur to below a level of 0.1%, and the company has over 300 active scrubbers in operation.

Clean Marine Product Page

Exhaust Gas Cleaning System



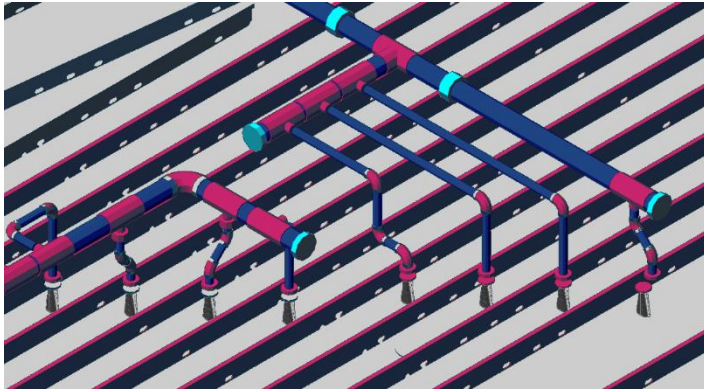
Clean Marine's U-type scrubber is certified to reduce Sulphur to below a level of 0.1 and is approved by all major class societies.

This scrubber features a clean open loop design made from high quality (SM0254) steel and the design's simplicity limits possible faults and wear of critical components, ensuring maximum longevity. It is proven to be extremely cost competitive per unit, in addition to offering further savings thanks to a lower ongoing OPEX.

The scrubber is constructed in a single unit and dropped into place on the vessel, minimising down time for installation. Operationally, there is no extra burden on the crew, and the straightforward design reduces training requirements and risk of error. The open loop precludes the need for caustic acid or wastewater to be stored on board for discharge at the port.

Over 80% of all scrubbers sold globally have been open loop for these reasons (source: DNV Class Society 2022).

Air Lubrication System



Air Lubrication Systems (ALS) aim to reduce frictional resistance between a vessel's hull and the water below. ALS does this by creating a thin layer of air under the hull bottom to generate air friction drag resistance and improve operational efficiency.

The Clean Marine ALS is made up of multiple outlets that are used to evenly distribute the air beneath the vessel, forming a proper air layer with maximum benefit. The system has proven reliability for continued use and Clean Marine offers an efficient installation time of 7-10 days on average.

The ALS comes with an automated control system which enables operation and monitoring from the wheelhouse, in addition to a live data-feed for on-shore monitoring and real-time assessment of vessel performance.